

KAPAKLAR İÇİN MONTAJ TALİMATLARI
ASSEMBLY INSTRUCTIONS FOR COVERS

1. Kanatlardaki tüm dikme profilleri toplamda 23 mm kısa kesilir.

STRUT PROFILE ON THE SASH SHOULD BE CUT 23 MM SHORTER IN TOTAL.

2. Kapaklarda bulunan iki tırnak 11552 nolu baza profillerine geçirilir.

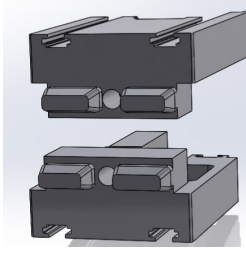
TWO CHANNELS ON THE COVER GOES INSIDE PROFILE NUMBER 11552.

3. Dikme profili kapak ile aynı formda olacak şekilde kapağın üst formuna takılır.

COMPATIBLE COVERS SHOULD BE INSTALLED ON THE TOP AND THE BOTTOM OF THE PROFILE.

4. Son olarak, kapak baza profiline Yıldız Havşa Başlı Ø3.9 x 38 mm vida ile monte edilir.

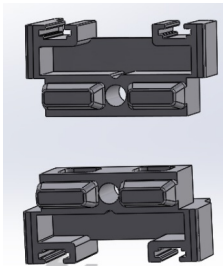
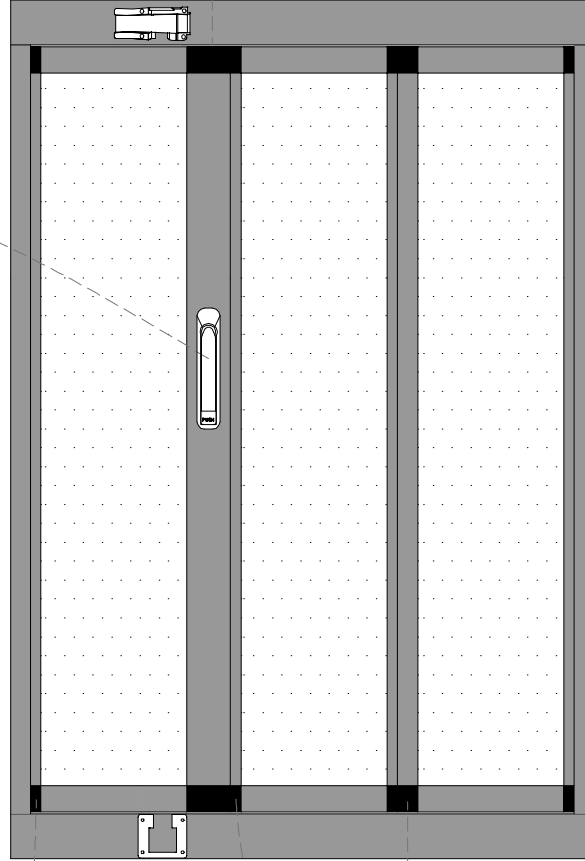
LASTLY, THE COVER SHOULD BE SCREWED INTO THE PROFILE WITH Ø3.9 x 38 MM PHILIPS STRAIGHT SCREWS.



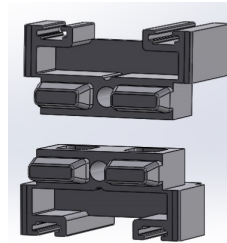
STOK KODU REFERENCE CODE	AKSESUAR ADI DESCRIPTION	AKSESUAR KODU PRODUCT CODE	PAKET PACK
13 400131	SPANYOLETLİ KANAT KAPA I ALT-ÜST ESPAGNOLETTE SASH COVER (TOP-BOTTOM)	ICB40 - BK.131	100 TK.



STOK KODU REFERENCE CODE	AKSESUAR ADI DESCRIPTION	AKSESUAR KODU PRODUCT CODE	PAKET PACK
13 400115	BASMA KOL PUSH HANDLE	ICB40 - BK.115	



STOK KODU REFERENCE CODE	AKSESUAR ADI DESCRIPTION	AKSESUAR KODU PRODUCT CODE	PAKET PACK
13 400132	KANAT B T M D KME KAPA I ALT-ÜST END SASH STRUT COVER (TOP-BOTTOM)	ICB40 - BDK.132	100 TK.



STOK KODU REFERENCE CODE	AKSESUAR ADI DESCRIPTION	AKSESUAR KODU PRODUCT CODE	PAKET PACK
13 400130	KANAT ARA D KME KAPA I ALT-ÜST MIDDLE SASH STRUT COVER (TOP-BOTTOM)	ICB40 - ADK.130	100 TK.